

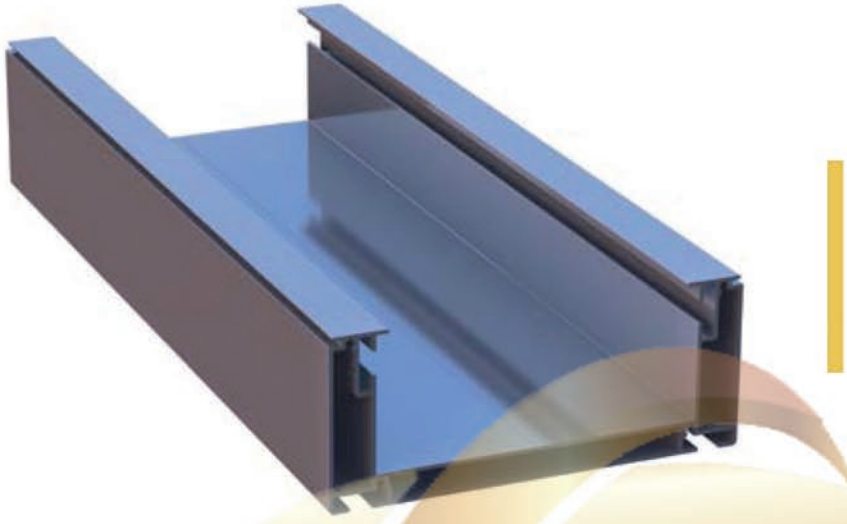
# ONAS

ROLLING ROOF SİSTEM PROFİLLERİ  
ROLLING ROOF SYSTEM PROFILES

[www.onastente.com](http://www.onastente.com)



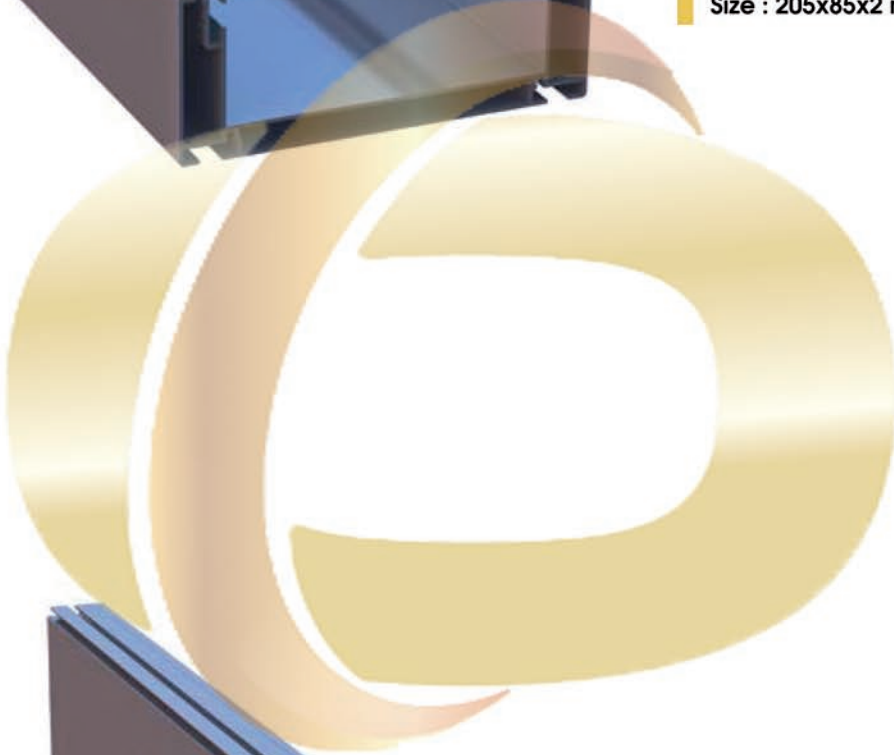
# ROLLING ROOF SİSTEM PROFİLLERİ /ROLLING ROOF SYSTEM PROFILES



**Oluk Profili**  
*Gutter Profile*

**Profile Nr : 2337**

**Weight kg/m: 4,560**  
**Size : 205x85x2 mm**



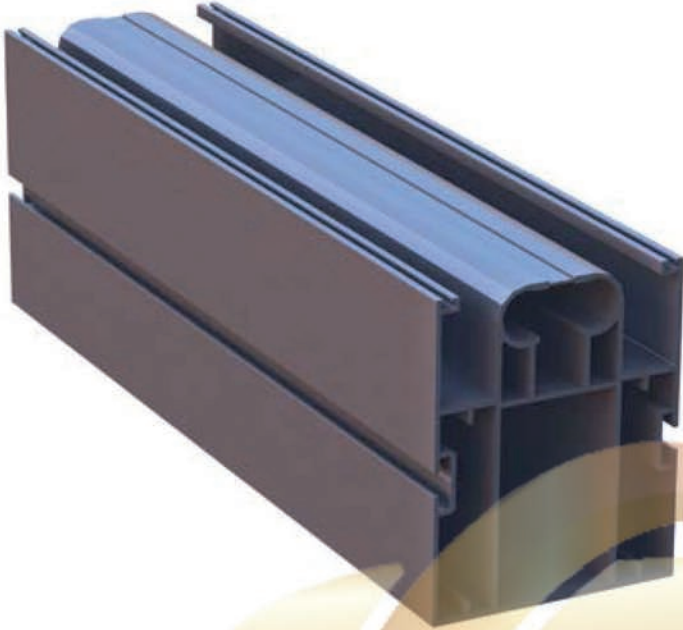
**Oluk Ön/Arka Kapama Profili**  
*Gutter Front / Rear Closure Profile*

**Profile Nr : 2338**

**Weight kg/m: 1,730**  
**Size : 29x185x1,6 mm**



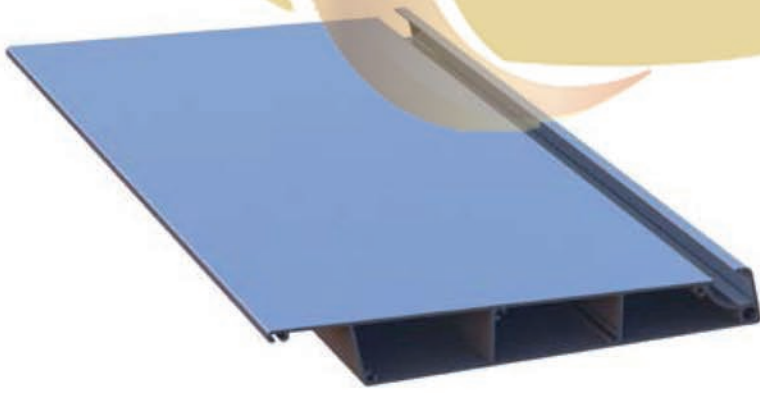
# ROLLING ROOF SİSTEM PROFİLLERİ /ROLLING ROOF SYSTEM PROFILES



**Ray Profili**  
*Rail Profile*

**Profile Nr : 2339**

**Weight kg/m: 7,770**  
**Size : 130x160x2,5 mm**



**Lamel Profili**  
*Lamella Profiles*

**Profile Nr : 2340**

**Weight kg/m: 3,879**  
**Size : 40x286x2 mm**



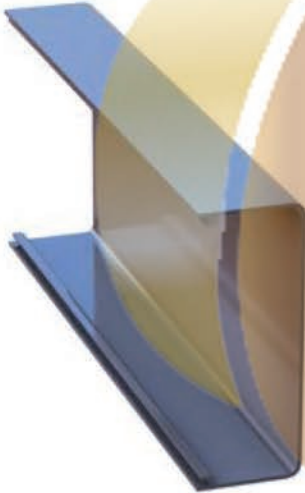
# ROLLING ROOF SİSTEM PROFİLLERİ /ROLLING ROOF SYSTEM PROFILES



**Dikme Profili**  
*Sewing Profile*

**Profile Nr : 2341**

**Weight kg/m: 3,028**  
**Size : 110x120x2 mm**



**Dikme Kapak Profili**  
*Sewing Cover Profile*

**Profile Nr : 2342**

**Weight kg/m: 1,055**  
**Size : 45x120x1,8 mm**



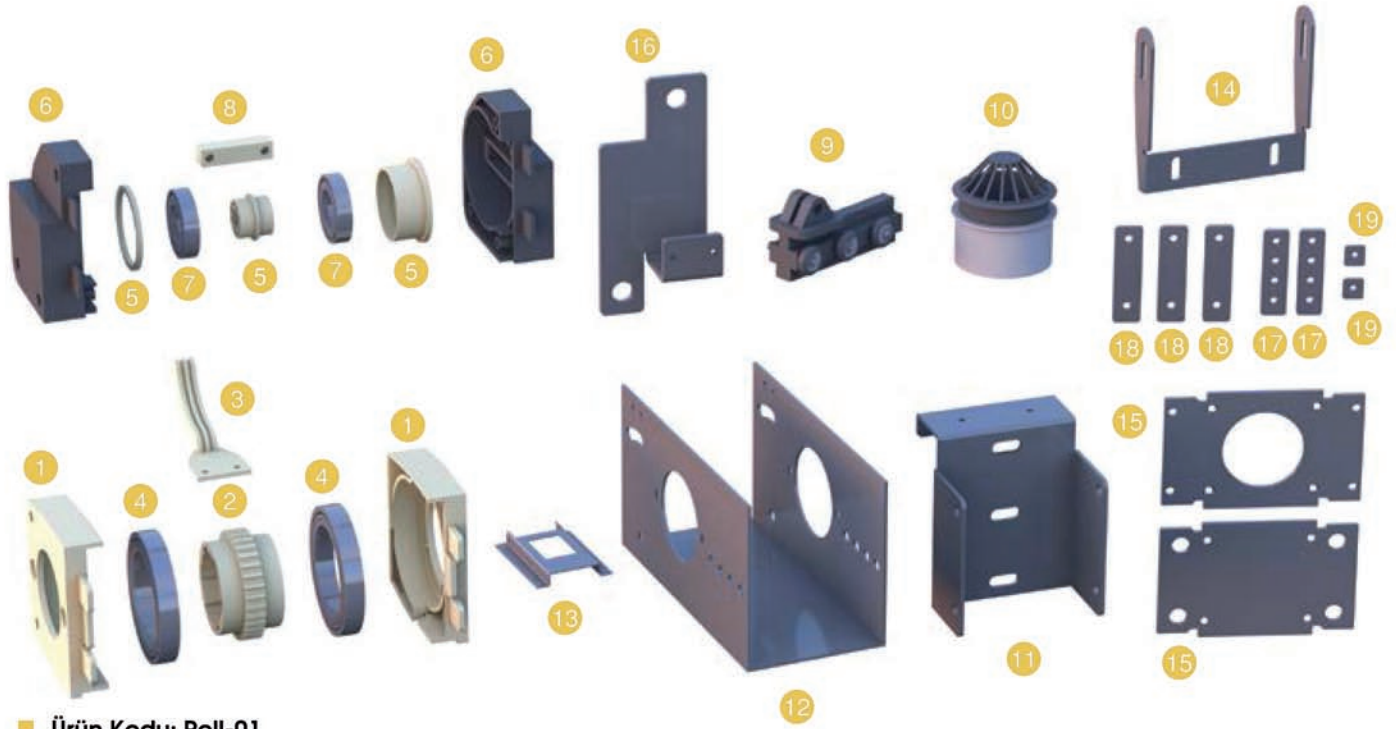
**Motor Borusu**  
*Motor Pipe*

**Profile Nr : 5312**

**Weight kg/m: 1,100**  
**Size : Ø 75,5x1,5 mm**



# ROLLING ROOF AKSESUARLARI/ROLLING ROOF ACCESSORIES



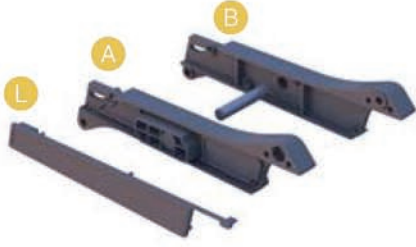
Ürün Kodu: Roll-01

Product Code: Roll-01

## KOLI İÇ TAKIM ADETLERİ / PIECES IN THE BOX

Roll-01	Ürün Adı / Product Name	Koli Adeti / Box
Roll-01-1	Arka Plastik Rulman Yatağı Sağ/Sol / Rear Plastic Bearing Right / Left	1 takım / set
Roll-01-2	T10 triger Dişli / T10 timing Gear	1 adet / piece
Roll-01-3	Triger Kayış Fren / Timing Belt Brake	1 adet / piece
Roll-01-4	6917 Çelik Rulman / 6917 Steel Bearing	2 adet / piece
Roll-01-5	Ön Rulman Yataklama Plastiği / Front Roller Bearing Plastic	1 takım / set
Roll-01-6	Ön Gergi Platik Dış Kasa Sağ/Sol / Front Tension Platic Outer Case Right / Left	1 takım / set
Roll-01-7	6007 Çelik Rulman / 6007 Steel Bearing	2 adet / piece
Roll-01-8	16x16 Kare Lama M8 Dişli / 16x16 Square Flat Bar M8	1 adet / piece
Roll-01-9	Ön Gergi Tekerli Ve Triger Bağlantı Plastiği / Front Tensioner Wheel and Timing Link Plastic	1 takım / set
Roll-01-10	75'Lik Su Gideri / 75 'Water Drain	1 adet / piece
Roll-01-11	Ray Arka Duvar Bağlantı Aparatı / Rail Rear Wall Connection Apparatus	1 adet / piece
Roll-01-12	Ray Arka (U) Bağlantı Aparatı / Rail Rear (U) Connection Apparatus	1 adet / piece
Roll-01-13	Araka 4. Lamel Bağlatı Aparatı / Rear 4 Th Lamella Fixing Apparatus	2 adet / piece
Roll-01-14	Ön Ray Oluk Bağlantı Aparatı / Front Rail Groove Connection Apparatus	1 adet / piece
Roll-01-15	Ayak Alt Üst Bağlantı Aparatı / Foot Lower Upper Connection Apparatus	1 takım / set
Roll-01-16	40x40 Duvar Askı Aparatı / 40x40 Wall Hanger Apparatus	1 adet / piece
Roll-01-17	Ray Arka Bağlantı Laması (M8 4 Delikli 25x100) / Rail Rear Connection Plate (M8 4 Holes 25x100)	2 adet / piece
Roll-01-18	Ray Ön Oluk Bağlantı Laması (M8 1 Delikli 25x25) / Rail Front Groove Connection Plate (M8 1 Hole 25x25)	2 adet / piece
Roll-01-19	Ray Ön Ve Ayak Bağlantı Laması (M8 2 Delikli 25x20) / Rail Front and Foot Connection Plate (M8 2 Holes 25x20)	3 adet / piece
Roll-01-20	M12x160 AKV Cıvata / M12x160 AKV Bolt	2 adet / piece
Roll-01-21	M8x16 Yuvarlak Başlı Kare Vida / M8x16 Round Head Square Screw	2 adet / piece
Roll-01-22	M8x70 İnbis Cıvata / M8x70 İnbis Bolt	2 adet / piece
Roll-01-23	M8x12 Bombe Baş İnbis Cıvata / M8x12 Round Head İnbis Bolt	20 adet / piece
Roll-01-24	M6x90 İnbis Cıvata / M6x90 İnbis Bolt	2 adet / piece
Roll-01-25	M6x70 İnbis Cıvata / M6x70 İnbis Bolt	2 adet / piece
Roll-01-26	M6x50 İnbis Cıvata / M6x50 İnbis Bolt	1 adet / piece
Roll-01-27	M12 Fiberli Somun / M12 Fiber Nut	2 adet / piece
Roll-01-28	M8 Fiberli Somun / M8 Fiber Nut	6 adet / piece
Roll-01-29	M6 Fiberli Somun / M6 Fiber Nut	5 adet / piece
Roll-01-30	6,3x32 YHB Saç Vidası / 6,3x32 YHB Hair Screw	8 adet / piece

## ROLLING ROOF AKSESUARLARI/ROLLING ROOF ACCESSORIES



**Lamel Sol Kapak Plastiği**  
*Lamel Left Cover Plastic*  
Product Code: Roll-02



**Lamel Sağ Kapak Plastiği**  
*Lamel Right Cover Plastic*  
Product Code: Roll-03



**Arka Lamel Sabitleme (Orta)**  
*Rear Lamel Fixing (Middle)*  
Product Code: Roll-04



**Arka Lamel Sabitleme (Kenar)**  
*Rear Lamel Fixing (Side)*  
Product Code: Roll-05



**Ön Lamel Mafsalı Sağ/Sol**  
*Front Lamella Joint Right / Left*  
Product Code: Roll-06



**Orta Lamel Mafsalı Sağ/Sol**  
*Middle Lamella Joint Right / Left*  
Product Code: Roll-07



**Arka Lamel Mafsalı Sağ/Sol**  
*Rear Lamella Joint Right / Left*  
Product Code: Roll-08



**Küçük Teker**  
*Small Wheel*  
Product Code: Roll-09



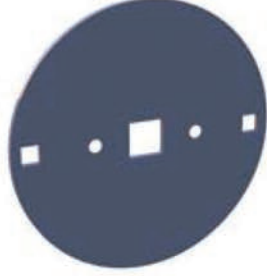
**Orta Ray Teker Mafsalı**  
*Middle Rail Wheel Joint*  
Product Code: Roll-10



# ROLLING ROOF AKSESUARLARI/ROLLING ROOF ACCESSORIES



**Oluk Sağ/Sol Kapak Aparatı**  
*Gutter Right/Left Cover Plate*  
Product Code: Roll-11



**Motor Sabitleme Aparatı**  
*Motor Fixing Apparatus*  
Product Code: Roll-12



**Somfy Motor Switch Bileziđi**  
*Somfy Motor Switch Bracelet*  
Product Code: Roll-13



**T10/16 Triger Kayıř**  
*T10/16 Timing Belt*  
Product Code: Roll-14



**Epdm Panel Contası**  
*Epdm Panel Gasket*  
Product Code: Roll-15



**Epdm Ray Contası**  
*Epdm Rail Gasket*  
Product Code: Roll-16



# ROLLING ROOF AKSESUARLARI/ROLLING ROOF ACCESSORIES



**4,2x19 Top Baş Vida**  
4,2x19 Ball Head Screw  
Product Code: Roll-17

**Oluk yan kapak bağlantı vidası**  
Gutter side cover connection bolt



**4,8x22 Havşa Baş Vida**  
4,8x22 Countersunk Head Screw  
Product Code: Roll-18

**Lamel plastik bağlantı vidası**  
Cover plate and plastic connection screw



**M8x40 İnbus Vida**  
M8x40 inbus screw  
Product Code: Roll-19

**Lamel üst plastik birleştirme vidası**  
Screw connecting the plastic on the cover plate



**M8x65 İnbus Vida**  
M8x65 inbus screw  
Product Code: Roll-20

**Lamel ile tekeri birleştirme vidası**  
Screw connecting plate and wheel



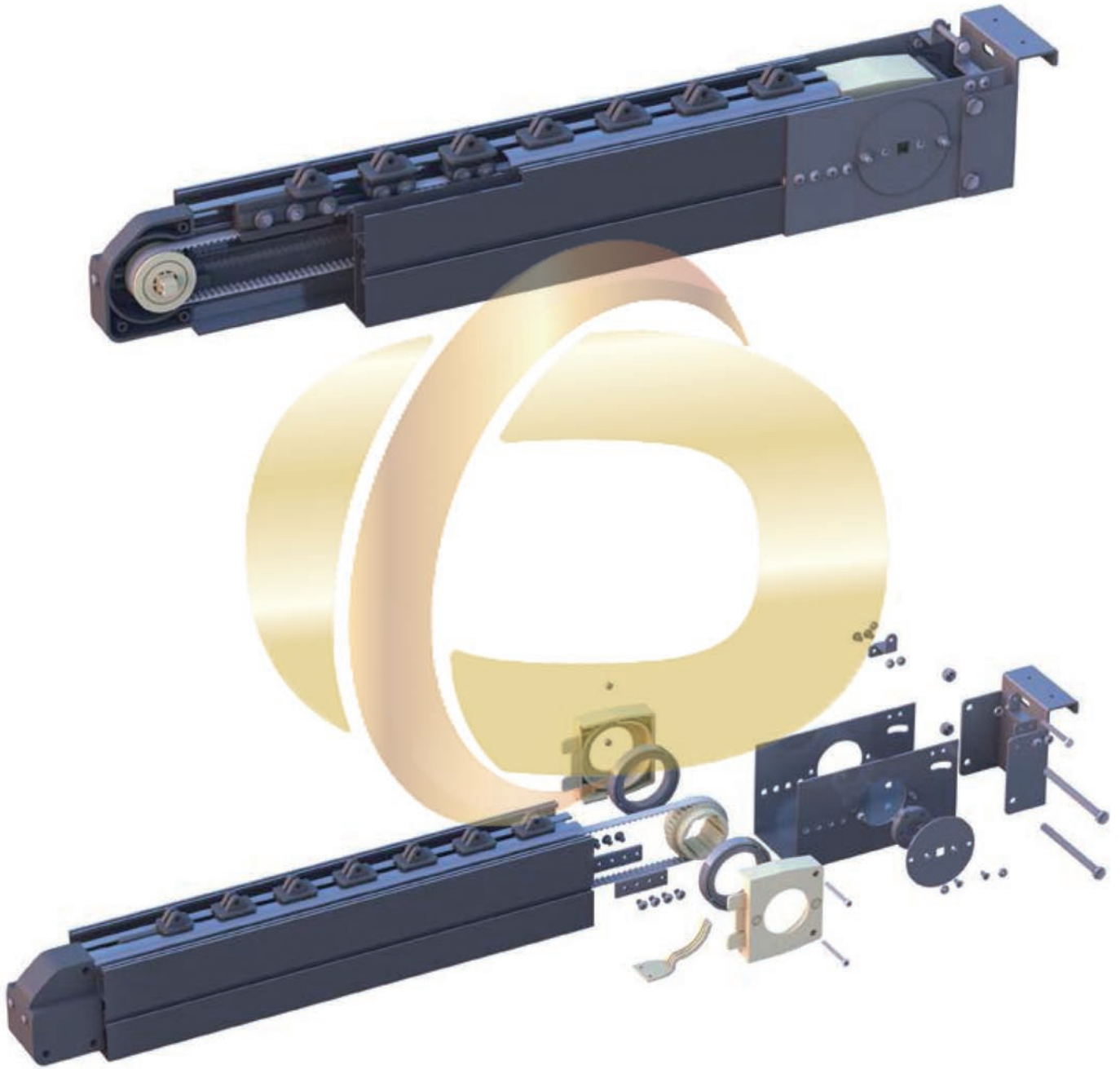
**M8 Fiber Somun**  
M8 Fiber Nut  
Product Code: Roll-21

Sadece roll-19 - roll-20 numarada kullanılıyor.  
It is used only in roll-19 - roll-20 numbers.

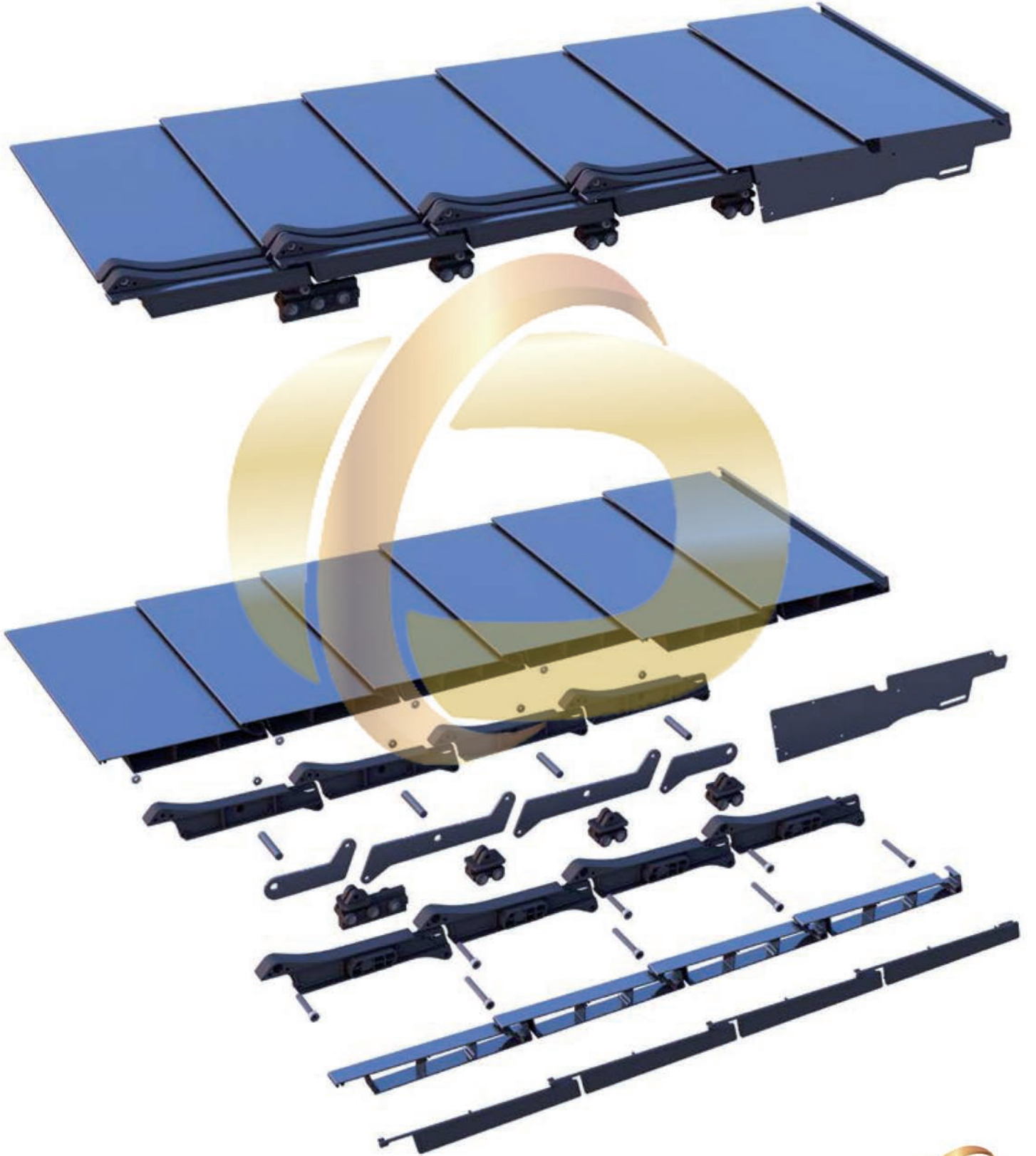




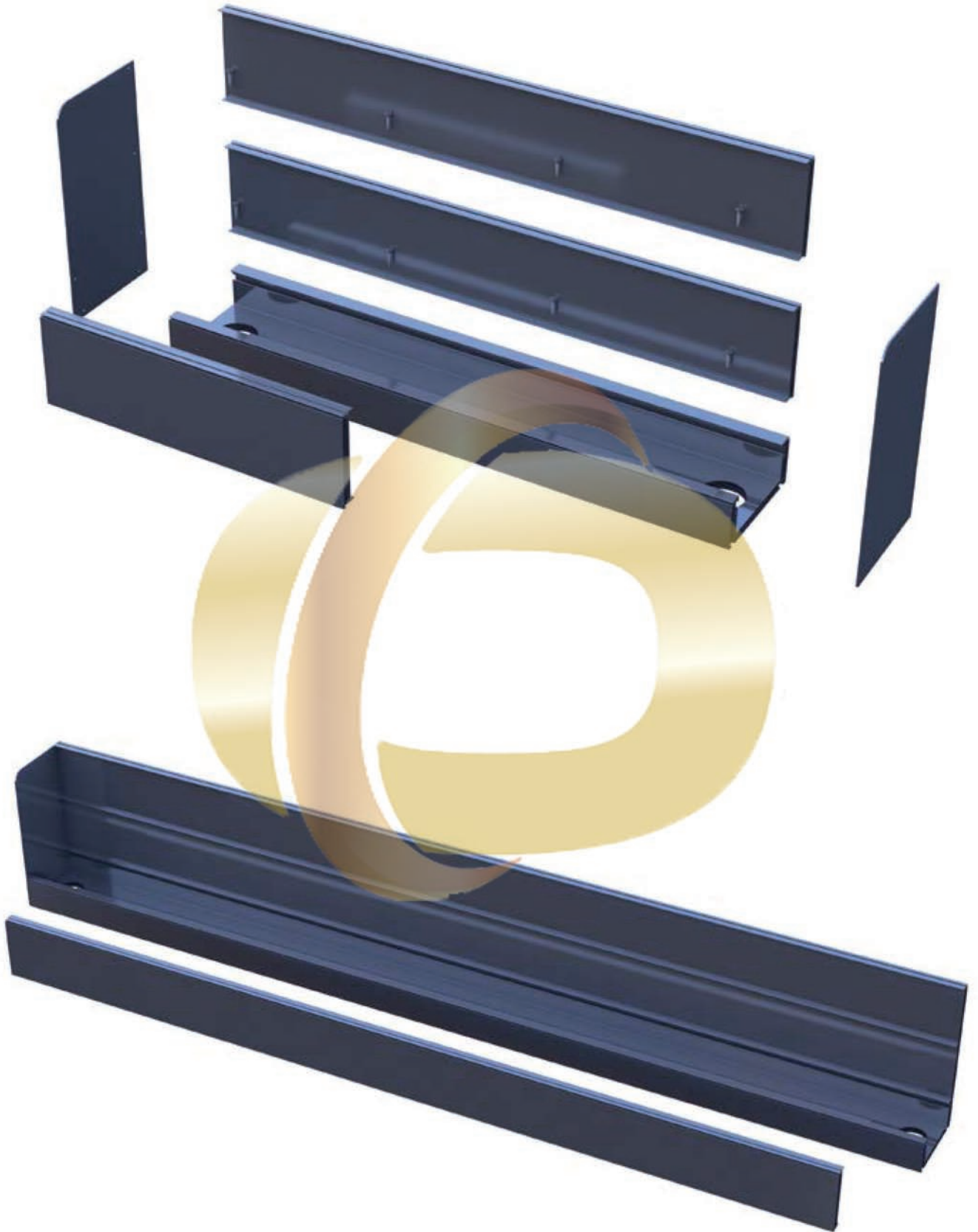
# RAY ÖN VE ARKA GERGİ MONTAJ ŞEMASI/RAIL FRONT AND REAR TENSION INSTALLATION SCHEME



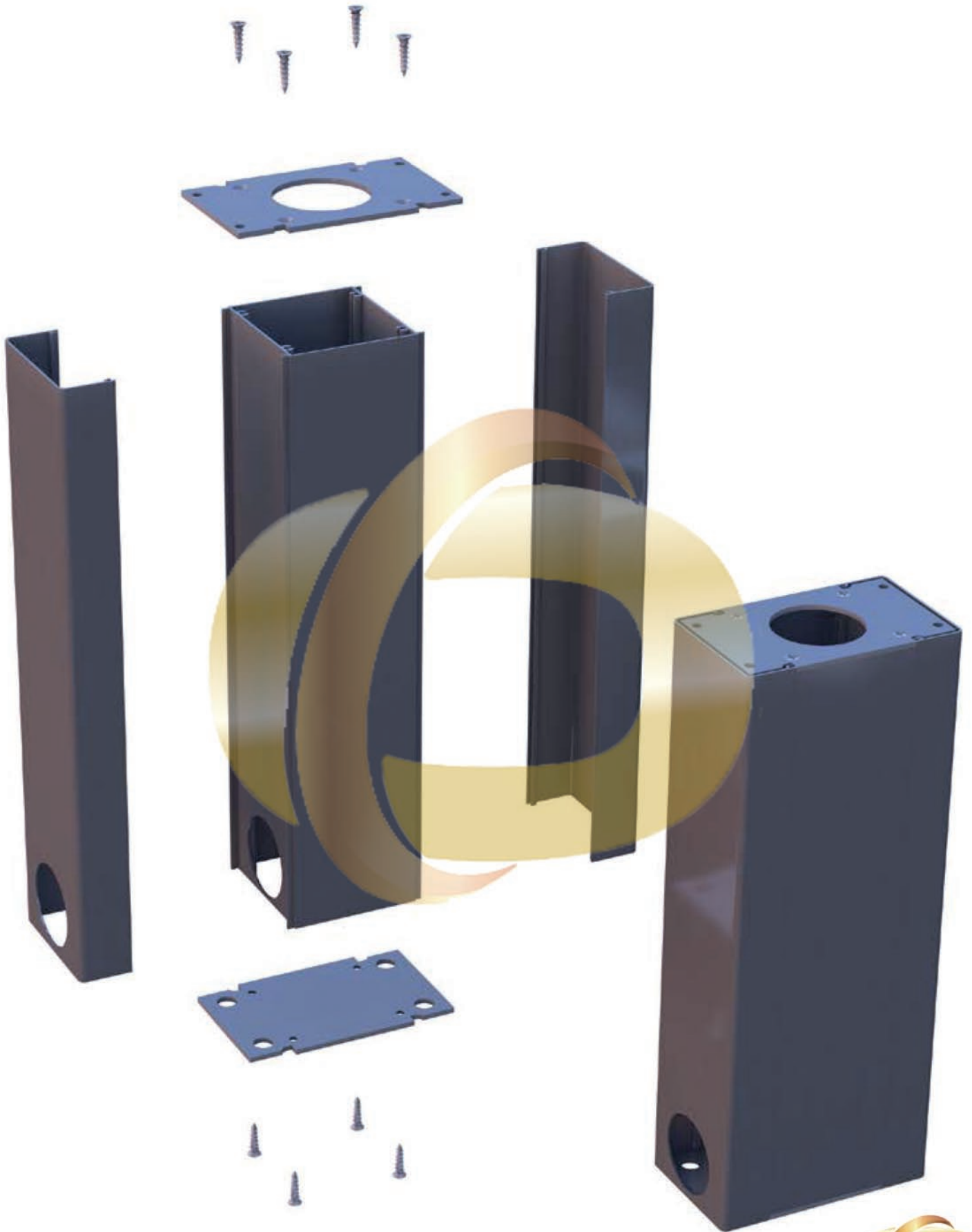
## LAMEL MONTAJ ŐEMASI/LAMELA ASSEMBLY DIAGRAM



## *OLUK MONTAJ ŞEMASI/GUTTER INSTALLATION SCHEME*

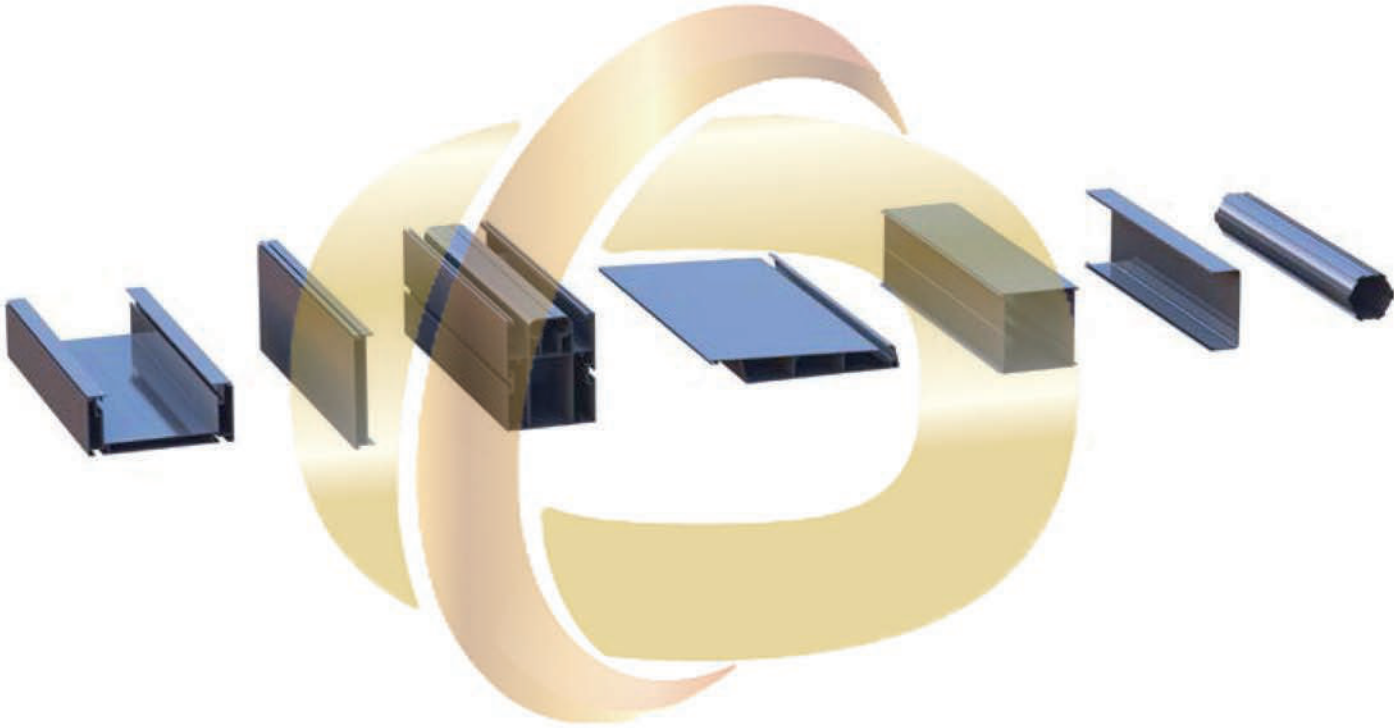


## OLUK MONTAJ ŞEMASI/GUTTER INSTALLATION SCHEME





## *TENTE VE CAM SİSTEMLERİ*



**ONAS TURİZM TEKSTİL İNŞAAT MAKİNA A.Ş.**

Batı Sitesi Mah. Gersan San. Sit.

2308. Cad. No:6 Y.Mahalle/ANKARA

TEL:0312 278 8028

[www.onastente.com](http://www.onastente.com)

[info@onastente.com](mailto:info@onastente.com)

